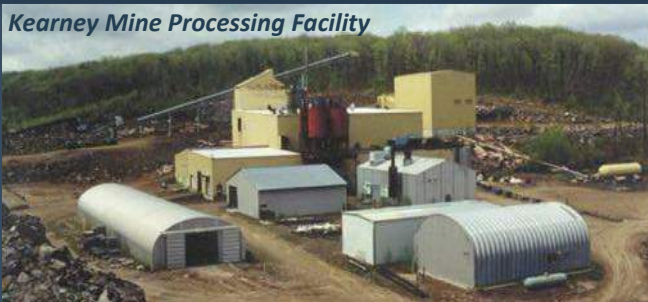




**ONTARIO
GRAPHITE**

Kearney Mine Processing Facility



***High Quality, Large Flake,
Near-Term Graphite Producer***



OGL Website Presentation v.16-11

• *Public Presentation*

Disclaimer

No representation or warranty, expressed or implied, is made as to the accuracy or completeness of the information contained in this presentation. Nothing contained herein is, or shall be relied upon as, a promise or representation as to the past or the future.

This presentation may include or incorporate by reference certain “forward-looking statements” within the meaning of applicable securities laws. Statements that are predictive, that depend upon or refer to future events or conditions or that include words such as “expect”, “anticipate”, “estimate”, “contemplate”, “target”, “plan”, “continue”, “budget”, “schedule”, “may”, “will”, “should”, “intend”, “believe” are forward-looking statements. Forward-looking statements are not guarantees of future results and performance but rather reflect our current views with respect to future events. Results are subject to risks, uncertainties, assumptions and other factors, and actual results and future events may differ materially from the conclusions, forecasts, projections or results anticipated in these forward-looking statements. Because of these risks and uncertainties, forward-looking statements should not be relied on. All of the forward-looking statements in this presentation, express or implied, are qualified by these cautionary statements.

Forward-looking statements are made as of the date of this presentation based on available information. Certain assumptions were applied in drawing conclusions or making forecasts or projections. Although such assumptions are considered reasonable as at the date of the presentation, the forward-looking information is inherently subject to significant business, economic and competitive uncertainties and contingencies. Some of the material risks, factors and assumptions that could cause actual results to differ materially from expectations include, but are not limited to, ability to stake mineral claims prior to competing businesses, staking of mineral claims on land unsuitable for development or land which does not encompass key mineral reserves, inability to raise or allocate sufficient capital to perform intended exploration and development or to maintain minimum yearly exploration expenses and consequent loss of mining claims, fluctuations in currency markets, fluctuations in spot and forward prices of minerals and other commodities, changes in national and local government legislation, taxation, controls, regulations and political or economic developments in Canada and internationally, other business opportunities that may be presented to or pursued, change in management or control of the company, activities of competing businesses, operating or technical difficulties in connection with mining, exploration or development activities, employee relations, availability and costs of mining and exploration inputs, labour and equipment, risks of obtaining necessary licences and permits, diminishing quantities or grades of mineral reserves, ability to meet operational expenses, contests over title or right to properties or mineral claims, conflicting aboriginal land claims and aboriginal rights, environmental regulations, the risks and hazards associated with mineral exploration and development, environmental hazards, industrial accidents, unusual or unexpected geological formations or pressures, flooding, inaccessibility of lands, inclement weather conditions and the risk of inadequate insurance or inability to obtain insurance. We disclaim any intention or obligation to withdraw, update or revise any forward-looking statements whether as a result of new information, future events or otherwise, except to the extent required by applicable laws.

No part of this presentation is intended to be deemed an offering of securities to investors.

The Ontario Graphite Opportunity

3

Location

Resource

People

1st-Mover

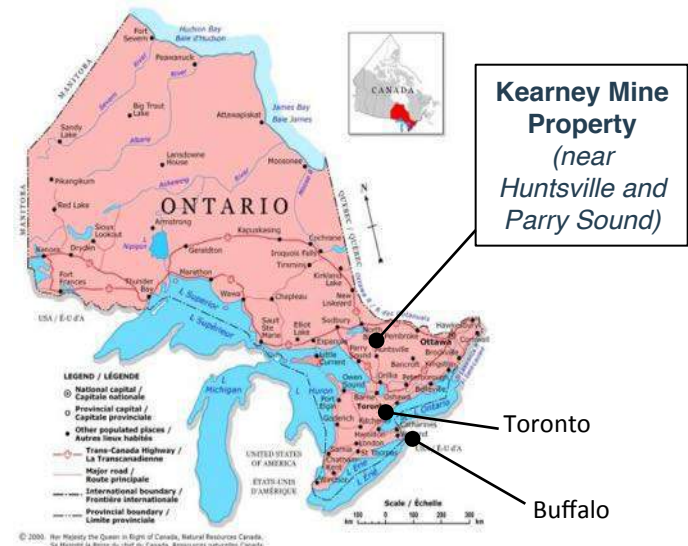
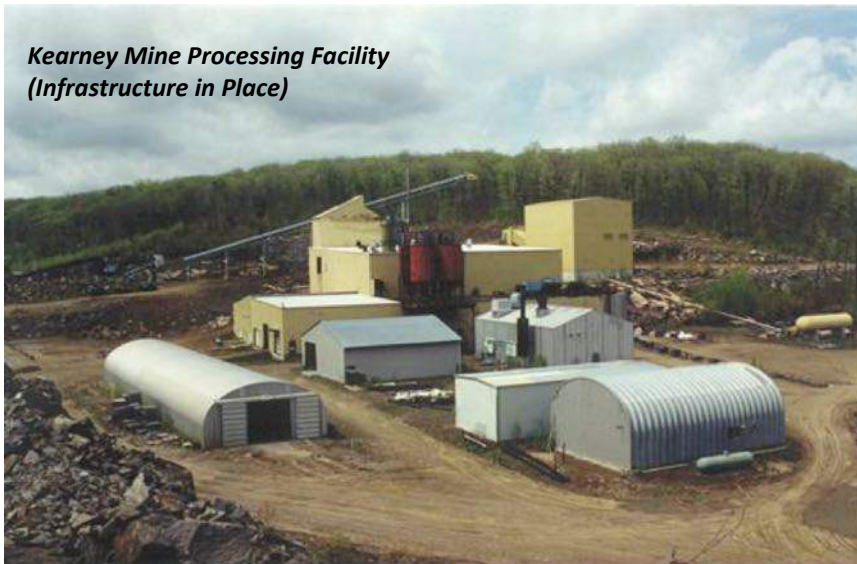
Focused on
High Margin

Seeking financing to complete re-commissioning of the world-class Kearney graphite project, centrally located 2.5 hours north of Toronto, with all approvals and majority of infrastructure already in place

- ✓ **Largest confirmed graphite resource in North America, and one of the largest in the world**
 - 51.5 Mt of Indicated at average grades of 2.14% Cg, and 46.8 Mt of inferred at average grades of 2.00% Cg
- ✓ **Strong leadership team, with average of 30 years experience in graphite and finance**
- ✓ **Strong future graphite market fundamentals**
 - Kearney is timely based on increasing supply/demand gap
 - Demand growing (LED, Li Batteries); supply strained (China shut-downs; limited new sizable projects)
- ✓ **~ 9 month ramp-up (after funding) to production of 22ktpa, at ~2.2% Cg head grade**
- ✓ **Substantial upside potential to increase capacity based on demand and faster resource exploitation**

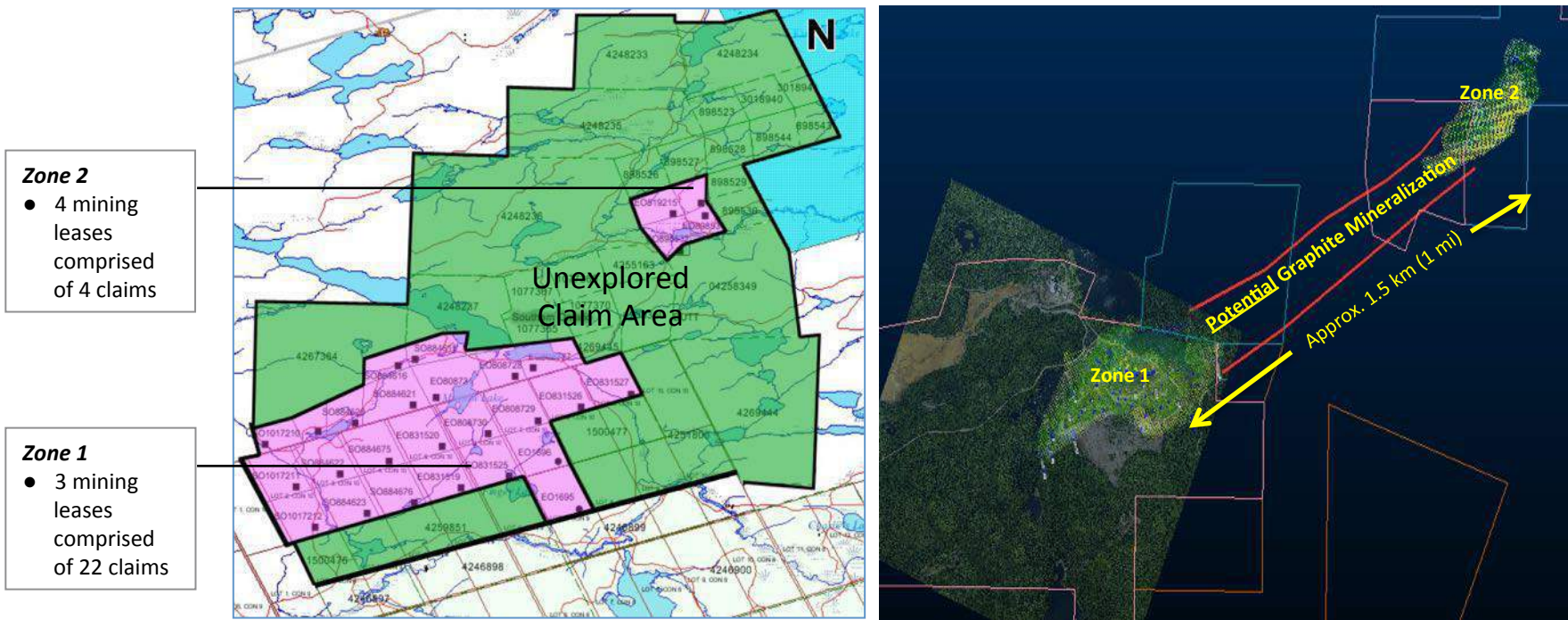
Kearney – Excellent Location with Infrastructure in Place

- Politically stable, first-rate country, with close proximity to major US graphite markets = dependable and timely delivery for US customers
- Ports for shipment to European customers
 - Toronto to site – 270 km of four lane highway, 30 km of paved road, 10 km of all weather logging and mine site road
- Area has strong political and community support for miners, equipment vendors and available labor
- Transportation costs can be kept relatively low, with OGL end products delivered directly to end-users



Kearney Claim Map – Significant Upside Potential

- Current leases are located in two zones
 - The 7 mining leases are comprised of 26 claims; all leases in effect have been renewed (21 year term)
- In addition OGL controls 29 additional active claims
 - 15 are owned free and clear; 14 are subject to royalty agreements with 2 third-party claim holders



Mineral Inventory – Largest Graphite Resource in N. America

6

- With the current plan to process ~1MM tonnes of ore per year, the property is expected to have more than 50 years of mine life (illustrates a case for a >20 mine life)

Golder Associates Block Model (August 2013)		
<u>Mineral Zone</u>	<u>Metric Tonnes</u>	<u>Carbon grade (%)</u>
Zone 1:		
Indicated Resources	51,505,894	2.14
Inferred Resources	28,393,361	2.00
Zone 2:		
Inferred Resources	18,427,547	2.00

Source: Golder Associates, NI 43-101 Technical Report and August 2013 Mineral Resource Estimate; Kearney Graphite Property Ontario, Canada

The Right Leadership Team in Place to Execute on Plan

7

Core Team – Average 30 Years Experience Working for Leading Graphite/Industrial Minerals Players



Tom Burkett (CEO)

- 37+ years of senior management and sales experience across North America, Europe and Asia in carbon and graphite sectors
- Most recently, US VP of Graphite Materials & Systems for SGL Group



Ellerton Castor (CFO)

- 24+ years of investment banking and principal investing experience including extensive work as an M&A advisor to a variety of companies in the Americas, Europe and Asia

All Major Permits in Place

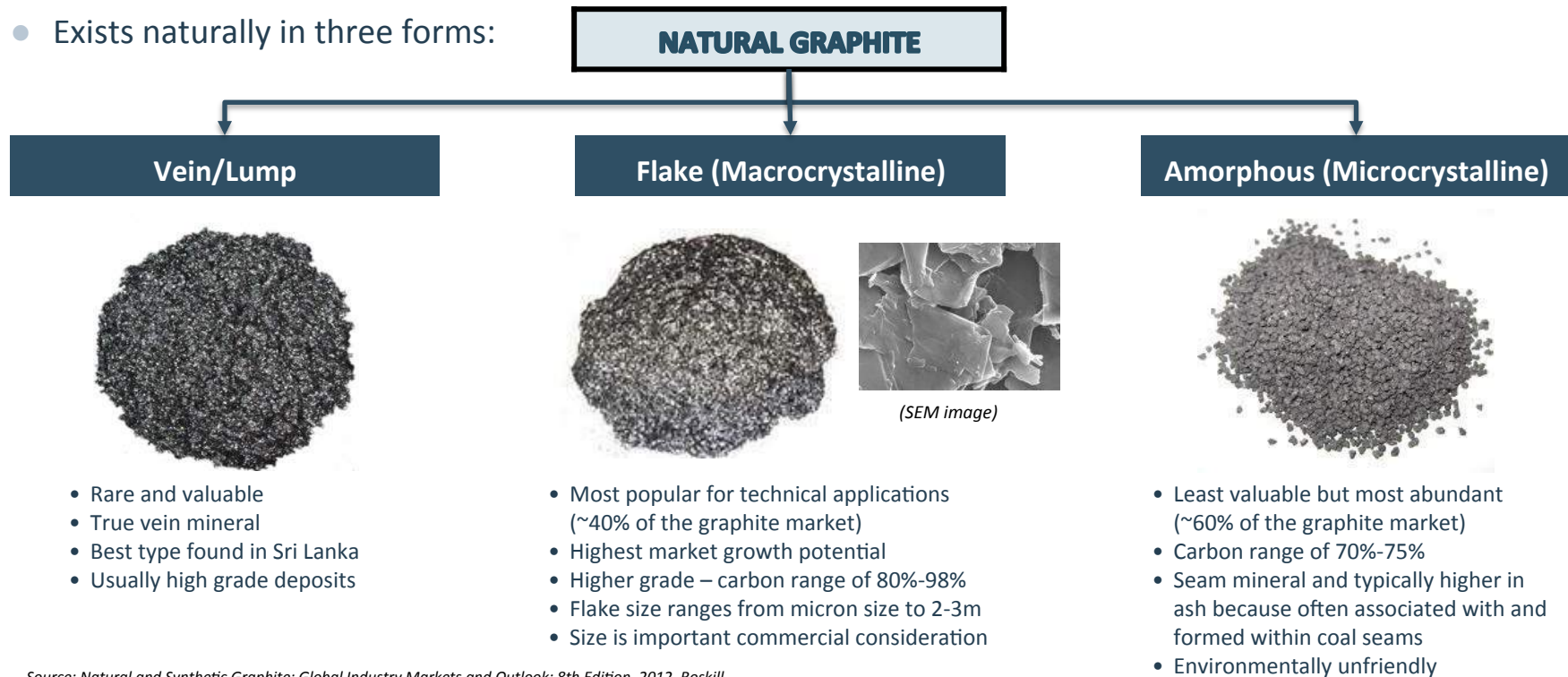
- OGL has all major permits in place and has passed technical reviews, public comment periods, and First Nations consultations; with MOUs in place with First Nations
- First Nations benefit agreements being negotiated & finalized in-line with MOUs

Permit	Ministry	Issuance Date	Approved
Closure plan	Northern Development	February 2012	<input checked="" type="checkbox"/>
Temporary PTTW (“Permit to Take Water”)	Environment	June 2012	<input checked="" type="checkbox"/>
Dam design	Natural Resources	October 2012	<input checked="" type="checkbox"/>
Archeological study	Tourism & Culture	November 2012	<input checked="" type="checkbox"/>
Site-wide PTTW	Environment	May 2013	<input checked="" type="checkbox"/>
Site-wide water environmental compliance approval	Environment	May 2013	<input checked="" type="checkbox"/>
Site-wide air/noise environmental compliance approval <i>(amended for different generator)</i>	Environment	May 2013	<input checked="" type="checkbox"/>

Graphite 101 – A Super Metal

- Natural graphite is an industrial mineral with many properties of a “Super Metal”
 - Exceptional heat and electrical conductivity properties (high melting point of 3,650 °C)
 - As thermally conductive as copper with 1/8th the density
 - Extremely resistant to strong acids, chemically inert and highly refractive
 - Outstanding lubrication properties due to the crystalline structure

- Exists naturally in three forms:



Source: *Natural and Synthetic Graphite: Global Industry Markets and Outlook; 8th Edition, 2012. Roskill*

Graphite's Many Uses Creates Significant Demand Potential

Natural Flake Graphite: Traditional Markets



Refractories



Crucibles



Polymers



Foils and Gaskets



Alkaline batteries



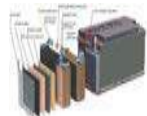
Li-ion Mobile Phone Batteries



Lubricants



Friction Materials



Lead Acid Batteries

Natural Flake Graphite: Emerging Markets



Graphenes



Thermal Management



LED's Thermally Conductive Plastics



Li-ion EV Batteries

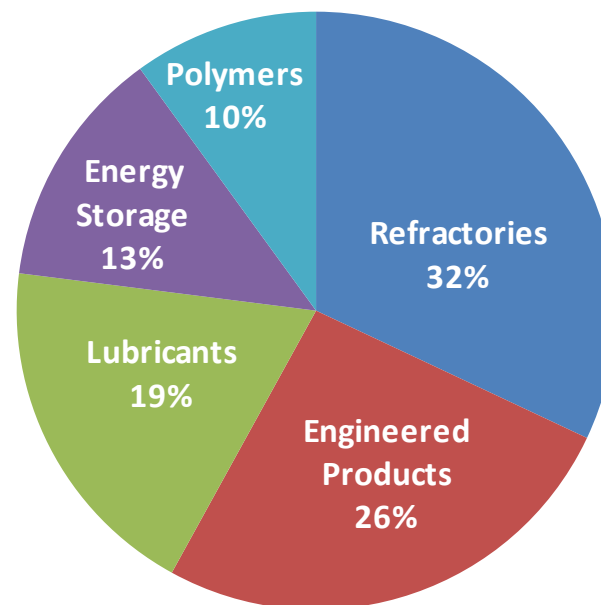


Super Capacitors



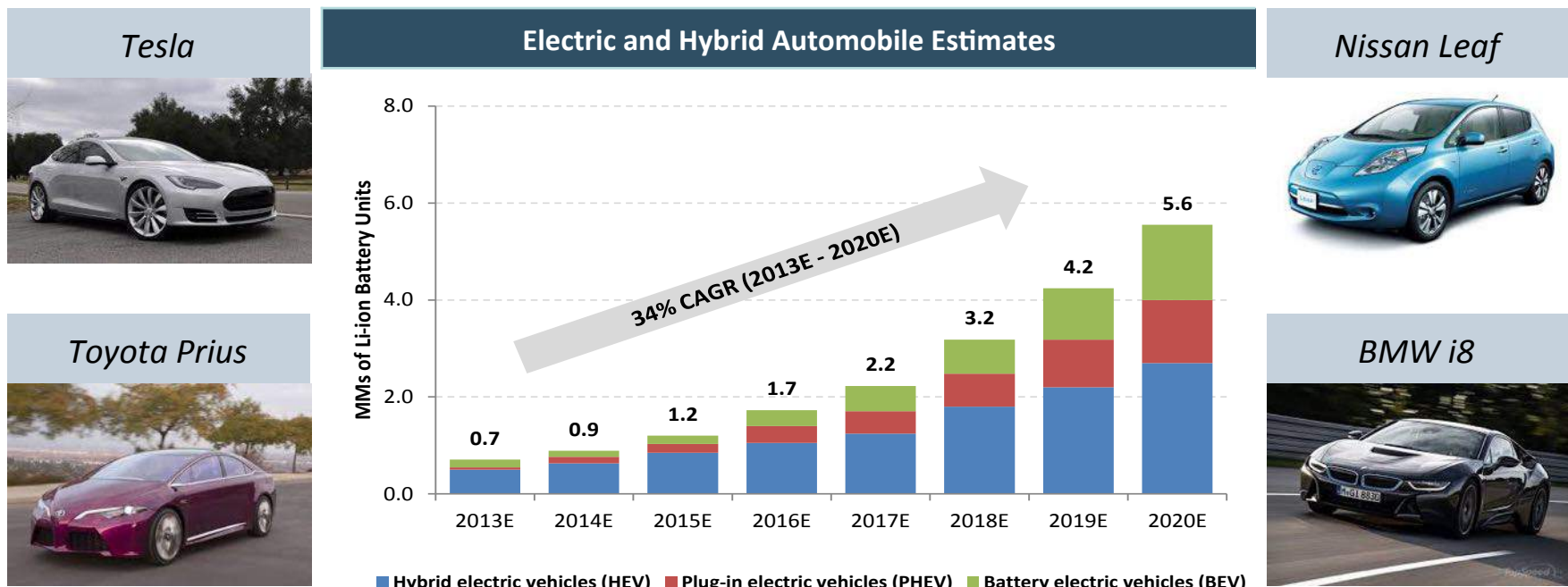
Fuel Cell Plates

2015 Core Market Segmentation: Natural Flake Graphite



Additional Upside in Automobile Sector via the Li-Ion Battery

- The electric and hybrid automobile market is expected to increase substantially by 2020
- New demand created by these vehicles could add as much as ~170,000 tonnes of graphite demand
 - The EV/HEV vehicles are projected to use ~30 - 100kg of graphite anode material per unit. This represents less than 1% of the total vehicle cost.
 - Excluding other graphite growth areas, the ~170,000 tonnes could represent growth of ~15% vs. 2015 consumption
 - Additional upside drivers include buses, power tools, and city ebikes



Sources: Based on Roskill Conversion: unit x kg ÷ 1000kg per tonne

OGI Mining and Processing

12

- Designed capacity of ~20ktpa (1MM tonnes ore) at head grades of ~2.2% Cg
- Anticipated ~20-year mine plan based on conventional open pit methods that will consist of drilling, blasting, loading, hauling and pit services on a full time schedule of 16 hours/day x 5 days/week
- Straight forward single-product plan with crushing, grinding, flotation, tailings, dewatering, product drying and sizing, and bagging
 - Historical data supports recoveries of ~90%, with 94%-97% Cg
- A micronizing and purification area to be assembled nearby

Kearney Mine Processing Facility



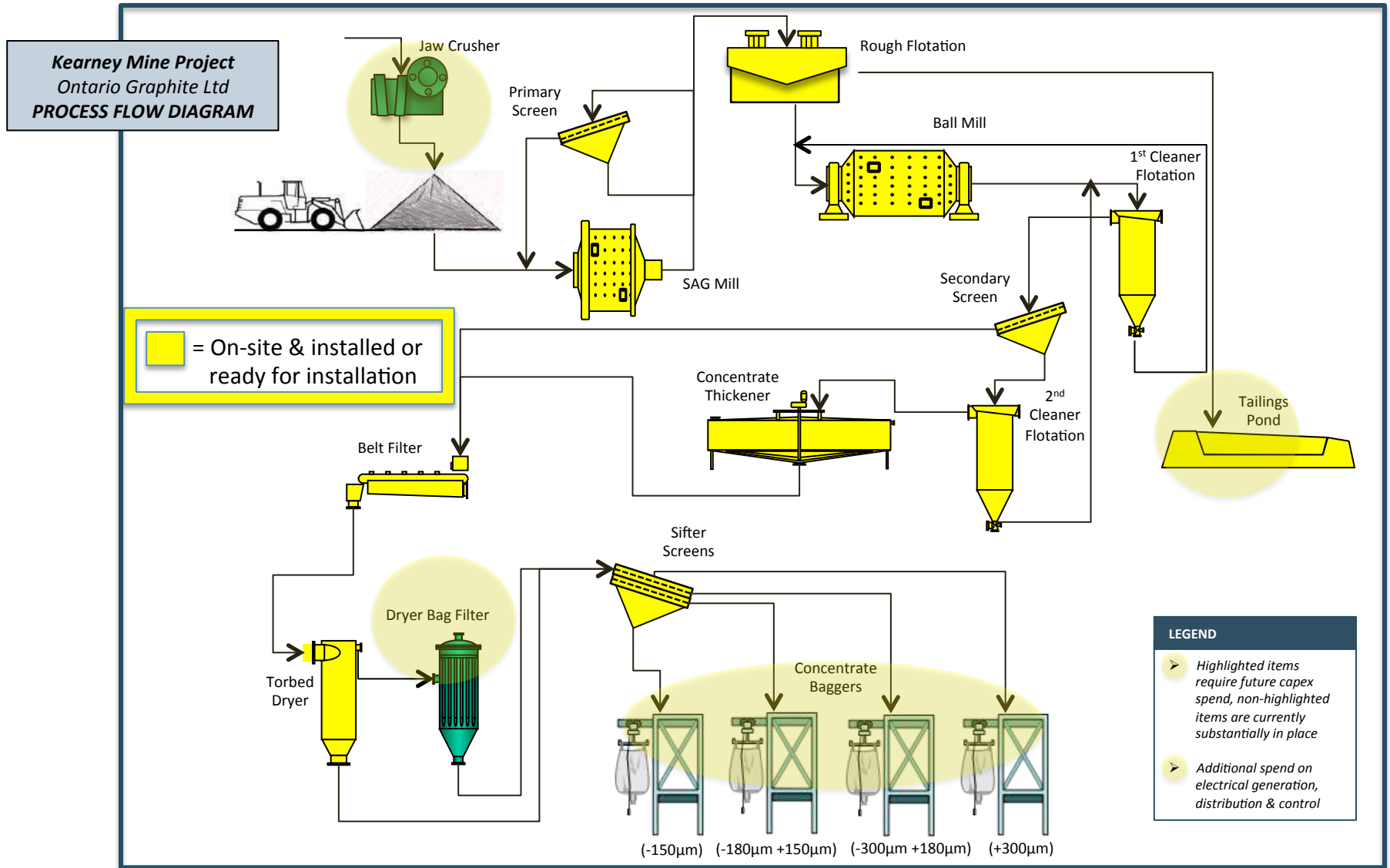
Ball Mill








Flotation Cells



OGL Processing Flowsheet – Majority of Equipment on Site



Buyers Want Consistent and Reliable Supply

What Buyers Want (OGL Meets Needs)	Impact to buyers	
Diversification from China	<ul style="list-style-type: none">• Reduction in dependence on China• Eliminate Chinese quality issues• Environmental issues - shutdowns and supply strain	
Increased Supply Reliability	<ul style="list-style-type: none">• Avoid delays or in-transit damage potential• Reduction in working capital• OGL able to run year round (China closed for weather 4+ months/year)	
Improved Operational Efficiency	<ul style="list-style-type: none">• Easier to plan production• Manage storage and A/P with weekly truckloads	
Source of Consistent Premium Flake	<ul style="list-style-type: none">• China produces limited amounts of large flake (+50 mesh)• Limited large scale operations producing large flake	

Why Ontario Graphite?

15

- ✓ **Location** – Easy Access to North American End-User Market
- ✓ **Resource** – Largest confirmed graphite resource in North America, and one of the largest globally
- ✓ **People** – Strong experience and deep relationships across the value chain. Great access to strong Mining Labor Market
- ✓ **First-mover advantage** – Can achieve robust market share, through long-term relationships, annual contracts and spot contracts with North American customers
- ✓ **Focused on high margin business** – Model developed to have ~+ 90% of targeted business in the high margin ROM and Micronized/Value-Add business

The Ontario Graphite Opportunity

16

Location

Resource

People

1st-Mover

Focused on
High Margin

Seeking financing to complete re-commissioning of the world-class Kearney graphite project, centrally located 2.5 hours north of Toronto, with all approvals and majority of infrastructure already in place

- ✓ **Largest confirmed graphite resource in North America, and one of the largest in the world**
 - 51.5 Mt of Indicated at average grades of 2.14% Cg, and 46.8 Mt of inferred at average grades of 2.00% Cg
- ✓ **Strong leadership team, with average of 30 years experience in graphite and finance**
- ✓ **Strong future graphite market fundamentals**
 - Kearney is timely based on increasing supply/demand gap
 - Demand growing (LED, Li Batteries); supply strained (China shut-downs; limited new sizable projects)
- ✓ **~ 9 month ramp-up (after funding) to production of 20ktpa, at ~2.2% Cg head grade**
- ✓ **Substantial upside potential to increase capacity based on demand and faster resource exploitation**

Thank you for Visiting the OGL Website